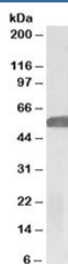


## GLP1R Antibody [Glucagon-like peptide 1 receptor] (R35296)

Catalog No.	Formulation	Size
R35296-100UG	0.5 mg/ml in 1X TBS, pH7.3, with 0.5% BSA (US sourced) and 0.02% sodium azide	100 ug

[Bulk quote request](#)

Availability	1-3 business days
Species Reactivity	Human
Predicted Reactivity	Mouse, Rat, Dog, Pig, Cow
Format	Antigen affinity purified
Clonality	Polyclonal (goat origin)
Isotype	Goat Ig
Purity	Antigen affinity
Gene ID	2740
Applications	Western Blot : 1-3ug/ml ELISA (peptide) LOD : 1:128000
Limitations	This GLP1R antibody is available for research use only.



Western blot testing of human hippocampus lysate with GLP1R antibody at 1ug/ml.  
Predicted molecular weight ~53 kDa.

### Description

Additional name(s) for this target protein: Glucagon-like peptide 1 receptor, GLP-1R, GLP1Rc, GLP-1 receptor, GLP-1-R

### Application Notes

Optimal dilution of the GLP1R antibody should be determined by the researcher.

### Immunogen

Amino acids QHQWDGLLSYQD were used as the immunogen for this GLP1R antibody. The amino acid sequence used as immunogen is from the extracellular portion of the protein.

## **Storage**

Aliquot and store the GLP1R antibody at -20oC.